

ELECTRIC FORKLIFT TRUCK SERIES Z 25 HD

CAPACITY 2.500 Kg
CENTER OF GRAVITY 500mm
VOLTAGE 80V
HIGH RESIDUAL CAPACITIES
AT HIGH LIFTING HEIGHTS
FAST LIFTING AND
TRACTION SPEED
VERY COMPACT FRAME

Z

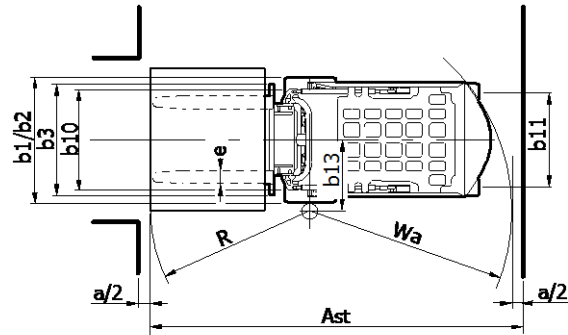
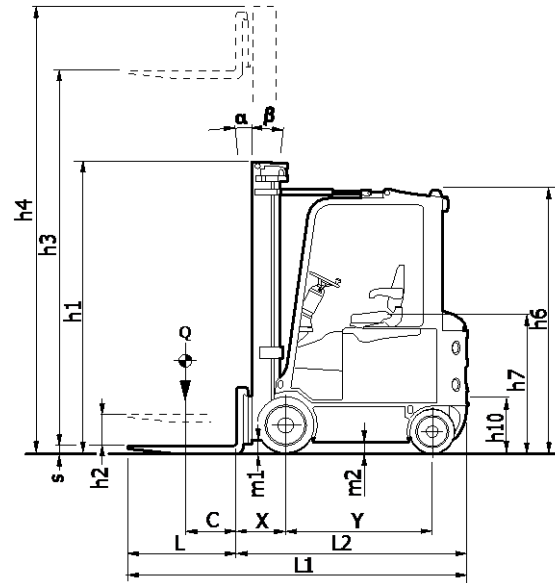
carer
Electric Forklift Trucks



ELECTRIC FORKLIFT TRUCK CARER Z 25 HD

MAIN FEATURES

- LOAD CAPACITY 2.500 Kg
- CENTER OF GRAVITY 500mm
- VOLTAGE 80V
- TYRES C-SE
- AC MOTORS
- MULTIFUNCTION DISPLAY
- DRUM BRAKES
- HIGH TILT CYLINDERS
- TRAVEL SPEED 18,0 km/h
- LIFTING SPEED 0,60 m/S
- BATTERY 80V Maximum capacity 625Ah



rev 3.0

The benefits of choosing CARER

The ability to maintain high residual capacities at great heights, the compactness of the frame and the high travel and lifting speed, make the Z25 HD the ideal truck for particular applications such as fruit and logistics.

Specifications

The series Z25HD is able to grant low cost of ownership, long work autonomy, high performances and excellent visibility thanks to the

high drive position that is ergonomically designed. These characteristics make this truck suitable for any condition of use, safe and reliable for heavy duty applications.

The turning radius, which is one of the best in its category, is another important hallmark.

CARER's electric motors are designed to grant high performance and high acceleration level.

The electronic system gives to the motors the power needed to perform high travel and lifting speed, great acceleration level and unmatched maneuverability. To increase the autonomy of work several batteries of different amperage are available. The battery, removable sideways, can be replaced by using a crane or a forklift.



IDENTIFICATION	1.1	Manufacturer		C.A.R.E.R. Srl
	1.2	Manufacturer's type designation		Z25HD
	1.3	Drive		electric
	1.4	Operator type		seat
	1.5	Load capacity/rated load	Q (t)	2,5
	1.6	Load centre distance	C (mm)	500
	1.8	Load distance	X (mm)	435 (1) (2)
	1.9	Wheelbase	Y (mm)	1360
	WEIGHTS	2.1	Weight	(kg)
2.2		Axle loading, laden front / rear	(kg)	6315 / 885
2.3		Axle loading, unladen front / rear	(kg)	2100 / 2600
WHEELS	3.1	Tyres type		C-SE
	3.2	Tyre size, front		533x203 21x8-9
	3.3	Tyre size, rear		413x152 16x6-8
	3.5	Wheels, number front rear (x = driven wheels)		2X/2
	3.6	Track width, front	b10 (mm)	900 - 958
	3.7	Track width, rear	b11 (mm)	826
	DIMENSIONS	4.1	Tilt of mast / fork carriage forward / backward	α/β (°)
4.2		Closed mast height	h1 (mm)	2475
4.3		Free lift	h2 (mm)	50
4.4		Lift (standard mast)	h3 (mm)	3650
4.5		Height, mast extended	h4 (mm)	4275
4.7		Height of overhead guard	h6 (mm)	2445
4.8		Seat height	h7 (mm)	1300
4.12		Coupling height	h10 (mm)	520
4.19		Overall length	L1 (mm)	3125
4.20		Length to face of forks	L2 (mm)	2125
4.21		Overall width	b1/b2 (mm)	1100-1150
4.22		Fork dimensions	exsXL (mm)	120x35x1000
4.23		Fork carriage iso 2328/30, FEM/A,B		2A
4.24		Fork-carriage width	b3 (mm)	900
4.31		Ground clearance, laden, below mast	m1 (mm)	110
4.32		Ground clearance, centre of wheelbase	m2 (mm)	90
4.33		Aisle width for pallets 1000x1200 crossways	Ast (mm)	3500
4.34	Aisle width for pallets 800x1200 lengthways	Ast (mm)	3700	
4.35	Turning radius	Wa (mm)	1860	
4.36	Internal turning radius	b13 (mm)	590	
PERFORMANCE	5.1	Travel speed, laden / unladen	(km/h)	17,0/18,0
	5.2	Lift speed, laden / unladen	(m/s)	0,42/0,60
	5.3	Lowering speed, laden / unladen	(m/s)	0,50/0,38
	5.5	Drawbar pull, laden / unladen (S2 60')	(N)	4500 / 4900
	5.6	Max. drawbar pull, laden / unladen (S2 5')	(N)	11800 / 12200
	5.7	Gradeability, laden / unladen (S2 30')	(%)	12 / 19
	5.8	Max. gradeability, laden / unladen (S2 5')	(%)	16 / 26
	5.9	Acceleration time, laden / unladen (10 m)	(s)	5,1 / 4,8
	5.10	Service brake: mech./hydr./electr.		hydraulic/electric
	MOTOR / BATT.	6.1	Drive motor rating (S2 60')	(kW)
6.2		Lift motor rating (S3 20%)	(kW)	19
6.4		Battery voltage	U (V)	80
6.4.1		Rated capacity	K5 (Ah)	575/625
6.5		Battery weight minimum/maximum	(kg)	1450/1600
OTHERS	8.1	Type of drive control		inverter
	8.2	Operating pressure for attachments	(bar)	160
	8.4	Sound level at the driver's ear	(dBA)	-

VDI 2198

Rev6 25/11/13

(1)With side-shifter integrated in the mast

(2)Mast dependent

Wheels tyre legend: SE super elastic - SEGEM super elastic twins - C cushion - L pneumatic - VLK vulkolan

The performance data refer to a forklift truck in perfect working condition, with battery weight corresponding to the values given in 6.5

In accordance with VDI Guideline 2198 this specification sheet provides details of the standard truck only. Non-standard tyres, different masts, optional equipment, etc. may result in different values.

The C.A.R.E.R. products and specifications are subject to change without notice



C.A.R.E.R. Srl
Via Copernico 13
48033 Cotignola (RA) Italia
Tel. +39 0545 1938010
Fax +39 0545 908070
info@carerforklift.com
www.carerforklift.com